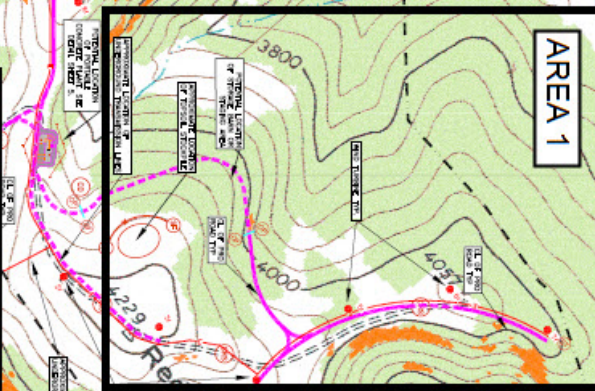
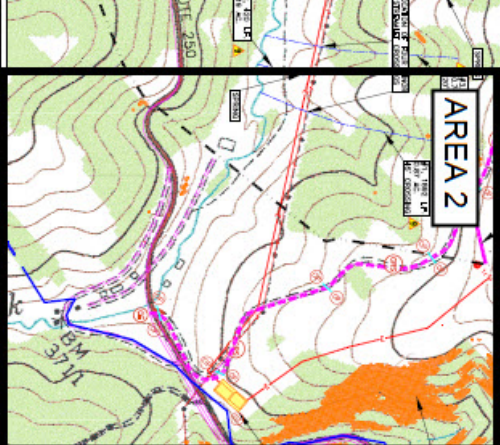
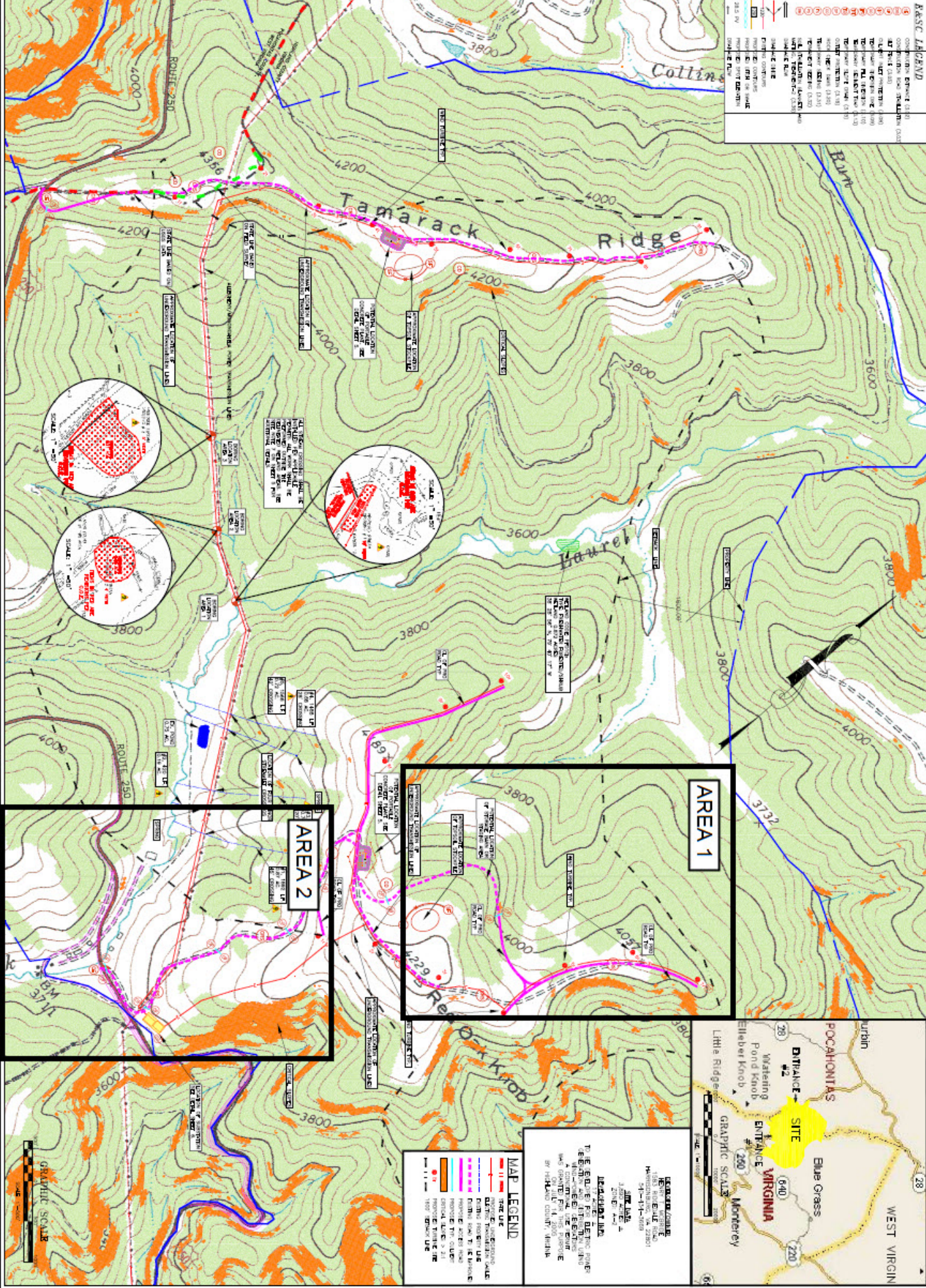


# Exhibit B



**BASIC LEGEND**

|  |   |
|--|---|
|  | BOUNDARY LINE   |
|  | CONTOUR LINE  |
|  | SPOT ELEVATION  |
|  | SPOT HEIGHT   |
|  | SPOT DEPRESSION   |
|  | SPOT ELEVATION WITH NOTE  |
|  | SPOT HEIGHT WITH NOTE   |
|  | SPOT DEPRESSION WITH NOTE   |
|  | SPOT ELEVATION WITH NOTE AND ARROW  |
|  | SPOT HEIGHT WITH NOTE AND ARROW   |
|  | SPOT DEPRESSION WITH NOTE AND ARROW   |
|  | SPOT ELEVATION WITH NOTE AND ARROW AND TEXT   |
|  | SPOT HEIGHT WITH NOTE AND ARROW AND TEXT  |
|  | SPOT DEPRESSION WITH NOTE AND ARROW AND TEXT  |
|  | SPOT ELEVATION WITH NOTE AND ARROW AND TEXT AND ARROW   |
|  | SPOT HEIGHT WITH NOTE AND ARROW AND TEXT AND ARROW  |
|  | SPOT DEPRESSION WITH NOTE AND ARROW AND TEXT AND ARROW  |
|  | SPOT ELEVATION WITH NOTE AND ARROW AND TEXT AND ARROW AND TEXT  |
|  | SPOT HEIGHT WITH NOTE AND ARROW AND TEXT AND ARROW AND TEXT   |
|  | SPOT DEPRESSION WITH NOTE AND ARROW AND TEXT AND ARROW AND TEXT                                       |
|  | SPOT ELEVATION WITH NOTE AND ARROW AND TEXT AND ARROW AND TEXT AND ARROW                              |
|  | SPOT HEIGHT WITH NOTE AND ARROW AND TEXT AND ARROW AND TEXT AND ARROW                                 |
|  | SPOT DEPRESSION WITH NOTE AND ARROW AND TEXT AND ARROW AND TEXT AND ARROW                             |
|  | SPOT ELEVATION WITH NOTE AND ARROW AND TEXT AND ARROW AND TEXT AND ARROW AND TEXT                     |
|  | SPOT HEIGHT WITH NOTE AND ARROW AND TEXT AND ARROW AND TEXT AND ARROW AND TEXT                        |
|  | SPOT DEPRESSION WITH NOTE AND ARROW AND TEXT AND ARROW AND TEXT AND ARROW AND TEXT                    |
|  | SPOT ELEVATION WITH NOTE AND ARROW AND TEXT AND ARROW AND TEXT AND ARROW AND TEXT AND ARROW           |
|  | SPOT HEIGHT WITH NOTE AND ARROW AND TEXT AND ARROW AND TEXT AND ARROW AND TEXT AND ARROW              |
|  | SPOT DEPRESSION WITH NOTE AND ARROW AND TEXT AND ARROW AND TEXT AND ARROW AND TEXT AND ARROW          |
|  | SPOT ELEVATION WITH NOTE AND ARROW AND TEXT AND ARROW AND TEXT AND ARROW AND TEXT AND ARROW AND TEXT  |
|  | SPOT HEIGHT WITH NOTE AND ARROW AND TEXT AND ARROW AND TEXT AND ARROW AND TEXT AND ARROW AND TEXT     |
|  | SPOT DEPRESSION WITH NOTE AND ARROW AND TEXT AND ARROW AND TEXT AND ARROW AND TEXT AND ARROW AND TEXT |



**LEGEND**

TO BE USED FOR DESIGN PURPOSES ONLY. THIS LEGEND IS NOT TO BE USED FOR ANY OTHER PURPOSES. THE DESIGNER ASSUMES RESPONSIBILITY FOR THE ACCURACY OF THE INFORMATION PROVIDED HEREIN. THE USER OF THIS LEGEND ASSUMES RESPONSIBILITY FOR THE ACCURACY OF THE INFORMATION PROVIDED HEREIN.

DATE: 12/15/2005  
 DRAWN BY: [Name]  
 CHECKED BY: [Name]

**MAP LEGEND**

|  |  |
|--|--|
|  | STATE BOUNDARY   |
|  | COUNTY BOUNDARY  |
|  | ROAD   |
|  | UTILITY LINE   |
|  | STREAM   |
|  | SPOT ELEVATION   |
|  | SPOT HEIGHT  |
|  | SPOT DEPRESSION  |
|  | SPOT ELEVATION WITH NOTE   |
|  | SPOT HEIGHT WITH NOTE  |
|  | SPOT DEPRESSION WITH NOTE  |
|  | SPOT ELEVATION WITH NOTE AND ARROW   |
|  | SPOT HEIGHT WITH NOTE AND ARROW  |
|  | SPOT DEPRESSION WITH NOTE AND ARROW  |
|  | SPOT ELEVATION WITH NOTE AND ARROW AND TEXT  |
|  | SPOT HEIGHT WITH NOTE AND ARROW AND TEXT   |
|  | SPOT DEPRESSION WITH NOTE AND ARROW AND TEXT                                       |
|  | SPOT ELEVATION WITH NOTE AND ARROW AND TEXT AND ARROW                              |
|  | SPOT HEIGHT WITH NOTE AND ARROW AND TEXT AND ARROW                                 |
|  | SPOT DEPRESSION WITH NOTE AND ARROW AND TEXT AND ARROW                             |
|  | SPOT ELEVATION WITH NOTE AND ARROW AND TEXT AND ARROW AND TEXT                     |
|  | SPOT HEIGHT WITH NOTE AND ARROW AND TEXT AND ARROW AND TEXT                        |
|  | SPOT DEPRESSION WITH NOTE AND ARROW AND TEXT AND ARROW AND TEXT                    |
|  | SPOT ELEVATION WITH NOTE AND ARROW AND TEXT AND ARROW AND TEXT AND ARROW           |
|  | SPOT HEIGHT WITH NOTE AND ARROW AND TEXT AND ARROW AND TEXT AND ARROW              |
|  | SPOT DEPRESSION WITH NOTE AND ARROW AND TEXT AND ARROW AND TEXT AND ARROW          |
|  | SPOT ELEVATION WITH NOTE AND ARROW AND TEXT AND ARROW AND TEXT AND ARROW AND TEXT  |
|  | SPOT HEIGHT WITH NOTE AND ARROW AND TEXT AND ARROW AND TEXT AND ARROW AND TEXT     |
|  | SPOT DEPRESSION WITH NOTE AND ARROW AND TEXT AND ARROW AND TEXT AND ARROW AND TEXT |

|  |   |   |  |
|--|---|---|--|
| <p>DATE: 12/15/2005</p> <p>SCALE: 1"=400'</p> <p>DRAWN BY: [Name]</p> <p>CHECKED BY: [Name]</p> <p>ISSUED BY: [Name]</p> | <p><b>SITE OVERVIEW</b></p> <p>HIGHLAND NEW WIND DEVELOPMENT</p> <p>HENRY T. MCBRIDE</p> <p>1563 RIDGEDALE ROAD</p> <p>HARRISONBURG, VA 22081</p> | <p>COMMONWEALTH OF VIRGINIA</p> <p>Diamond H. Blackwell</p> <p>1563 RIDGEDALE ROAD</p> <p>HARRISONBURG, VA 22081</p> <p>PROFESSIONAL ENGINEER</p> | <p><b>BLACKWELL ENGINEERING, PLC</b></p> <p>565 East Market Street</p> <p>Harrisonburg, Virginia 22801</p> <p>PHONE: (540) 443-6555 FAX: (540) 444-1044</p> <p>WWW.BLACKWELLENGINENR.COM</p> |
|--|---|---|--|



# Exhibit C



# AREA 1: Turbine sites and access roads

1500' road (50-55' wide):  
construction underway or  
completed.

Turbine sites 5, 6, and 7:  
grading underway or  
completed.

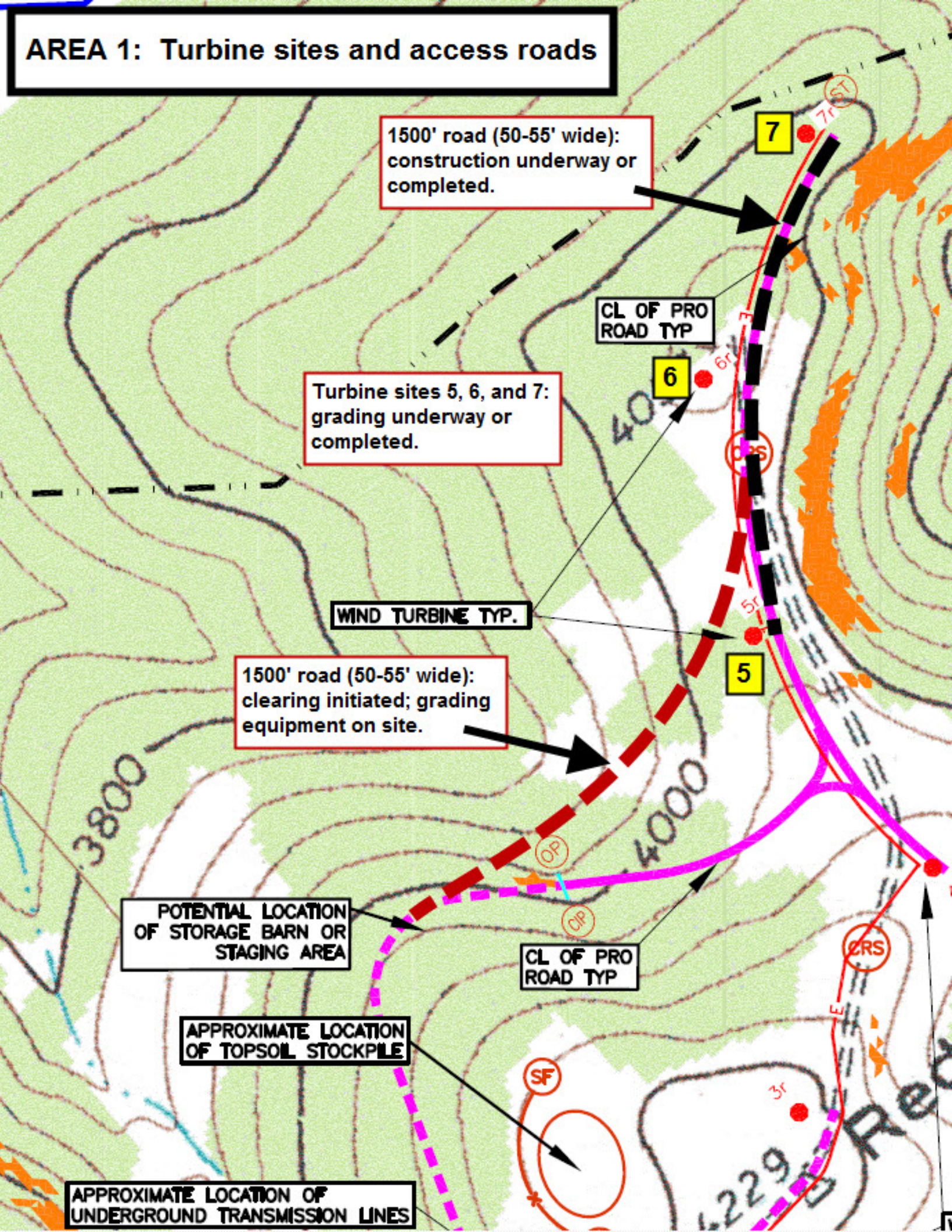
WIND TURBINE TYP.

1500' road (50-55' wide):  
clearing initiated; grading  
equipment on site.

POTENTIAL LOCATION  
OF STORAGE BARN OR  
STAGING AREA

APPROXIMATE LOCATION  
OF TOPSOIL STOCKPILE

APPROXIMATE LOCATION OF  
UNDERGROUND TRANSMISSION LINES





# Exhibit D



# AREA 2: Substation and access road

#3, 1  
0.74 AC.  
20' CROSSING

#1, 1892 LF.  
0.87 AC.  
45' CROSSING

INOR  
GS

Substation: site  
preparation excavation  
underway or completed.

800' road (50-55' wide):  
construction underway or  
completed.

SPRING

